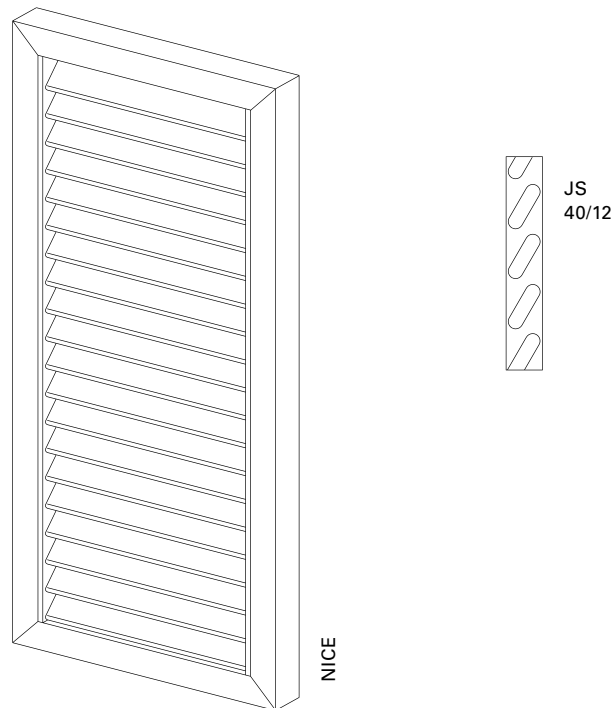
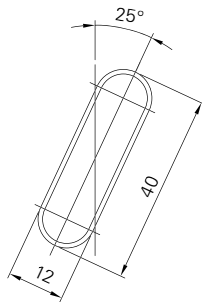


NICE



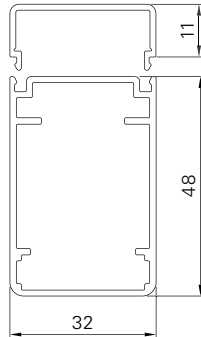
Surface	Fine structure matt (standard), silk gloss, matt Powder-coated 200°C before assembly
Colours	RAL Classic, RAL Design, NCS, VSR
Finishes	Wood, stone, rust
Pretreatment	Ocean Line Plus possible
Notes	Electric drive and finish are not possible in combination with special shapes Drain holes at bottom of frame Fittings can only be integrated to a limited extent Slats are exchangeable

Slat profile



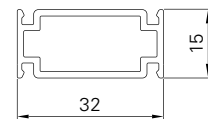
JS

Frame profile



R48

Horizontal cross-panel/
Vertical cross-panel



L15

Min./Max. dimensions	Width: 280 to 800 mm Height: 800 to 2500 mm
Min./max. infeed	33,0–36,7 mm
Inclination angle	25°
Weight	Approx. 6 kg/m ²
Frame profile	48 × 32 mm extruded aluminium hollow chamber profile
Slat profile	40 × 12 mm extruded aluminium hollow chamber profile
Slat carrier profile	32 × 11 mm extruded aluminium
Stop bead	Supplied loose, black or white rubber (depending on sash colour)

Corner connections Aluminium bracket, glued-in and additionally secured by plastic pins

Options Notching | Electric drive | Vertical cross-panel | Rabbet bead | Horizontal cross-panel | Half-round arch (mounted) | Pre-installation | Basic frame | Catch | Segmental arch, hollow (mounted) | Frames | Segmental arch, solid (mounted) | Special shapes (arched frame profile)